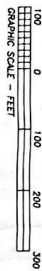


- Basis of Bearings -

Automatic North as determined by Solar Observation

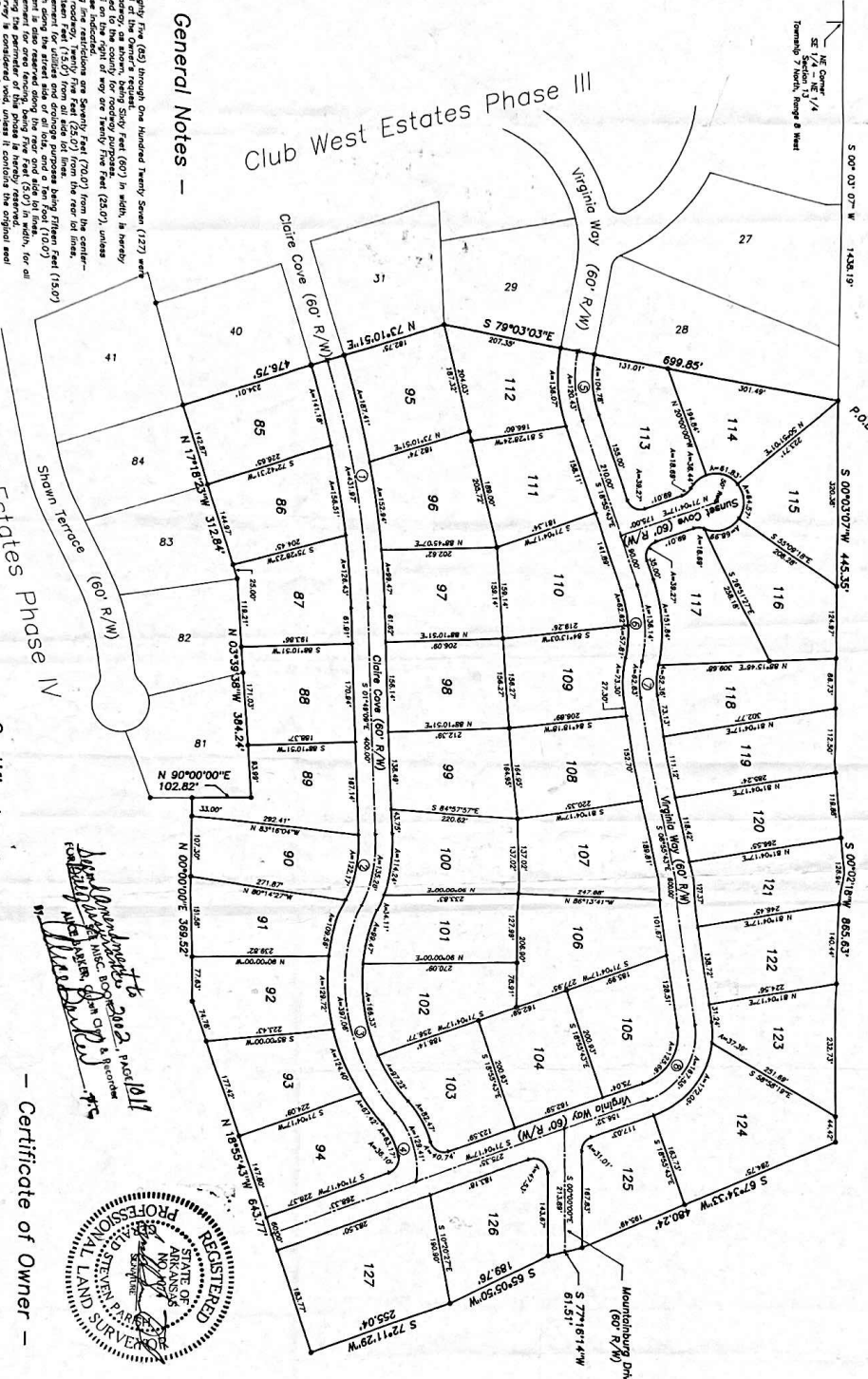


- Legend -

- \* Found Cotton Spindle
- ⊕ Found Rebor
- Set 3/8" Rebor w/plastic cap
- △ Computed Point
- ① Curve Number

- Legal Description -

NE Corner  
SE 1/4 - NE 1/4  
Section 13  
Township 7 North, Range 8 West



– General Notes –

- Let *E* fly free (26) through one hundred twenty-seven (127) feet of the Owens' rough (27) and (28) water, the (29) (30) (31) (32) (33) (34) (35) (36) (37) (38) (39) (40) (41) (42) (43) (44) (45) (46) (47) (48) (49) (50) (51) (52) (53) (54) (55) (56) (57) (58) (59) (60) (61) (62) (63) (64) (65) (66) (67) (68) (69) (70) (71) (72) (73) (74) (75) (76) (77) (78) (79) (80) (81) (82) (83) (84) (85) (86) (87) (88) (89) (90) (91) (92) (93) (94) (95) (96) (97) (98) (99) (100) (101) (102) (103) (104) (105) (106) (107) (108) (109) (110) (111) (112) (113) (114) (115) (116) (117) (118) (119) (120) (121) (122) (123) (124) (125) (126) (127) (128) (129) (130) (131) (132) (133) (134) (135) (136) (137) (138) (139) (140) (141) (142) (143) (144) (145) (146) (147) (148) (149) (150) (151) (152) (153) (154) (155) (156) (157) (158) (159) (160) (161) (162) (163) (164) (165) (166) (167) (168) (169) (170) (171) (172) (173) (174) (175) (176) (177) (178) (179) (180) (181) (182) (183) (184) (185) (186) (187) (188) (189) (190) (191) (192) (193) (194) (195) (196) (197) (198) (199) (200) (201) (202) (203) (204) (205) (206) (207) (208) (209) (210) (211) (212) (213) (214) (215) (216) (217) (218) (219) (220) (221) (222) (223) (224) (225) (226) (227) (228) (229) (230) (231) (232) (233) (234) (235) (236) (237) (238) (239) (240) (241) (242) (243) (244) (245) (246) (247) (248) (249) (250) (251) (252) (253) (254) (255) (256) (257) (258) (259) (260) (261) (262) (263) (264) (265) (266) (267) (268) (269) (270) (271) (272) (273) (274) (275) (276) (277) (278) (279) (280) (281) (282) (283) (284) (285) (286) (287) (288) (289) (290) (291) (292) (293) (294) (295) (296) (297) (298) (299) (300) (301) (302) (303) (304) (305) (306) (307) (308) (309) (310) (311) (312) (313) (314) (315) (316) (317) (318) (319) (320) (321) (322) (323) (324) (325) (326) (327) (328) (329) (330) (331) (332) (333) (334) (335) (336) (337) (338) (339) (340) (341) (342) (343) (344) (345) (346) (347) (348) (349) (350) (351) (352) (353) (354) (355) (356) (357) (358) (359) (360) (361) (362) (363) (364) (365) (366) (367) (368) (369) (370) (371) (372) (373) (374) (375) (376) (377) (378) (379) (380) (381) (382) (383) (384) (385) (386) (387) (388) (389) (390) (391) (392) (393) (394) (395) (396) (397) (398) (399) (400) (401) (402) (403) (404) (405) (406) (407) (408) (409) (410) (411) (412) (413) (414) (415) (416) (417) (418) (419) (420) (421) (422) (423) (424) (425) (426) (427) (428) (429) (430) (431) (432) (433) (434) (435) (436) (437) (438) (439) (440) (441) (442) (443) (444) (445) (446) (447) (448) (449) (450) (451) (452) (453) (454) (455) (456) (457) (458) (459) (460) (461) (462) (463) (464) (465) (466) (467) (468) (469) (470) (471) (472) (473) (474) (475) (476) (477) (478) (479) (480) (481) (482) (483) (484) (485) (486) (487) (488) (489) (490) (491) (492) (493) (494) (495) (496) (497) (498) (499) (500) (501) (502) (503) (504) (505) (506) (507) (508) (509) (510) (511) (512) (513) (514) (515) (516) (517) (518) (519) (520) (521) (522) (523) (524) (525) (526) (527) (528) (529) (530) (531) (532) (533) (534) (535) (536) (537) (538) (539) (540) (541) (542) (543) (544) (545) (546) (547) (548) (549) (550) (551) (552) (553) (554) (555) (556) (557) (558) (559) (560) (561) (562) (563) (564) (565) (566) (567) (568) (569) (570) (571) (572) (573) (574) (575) (576) (577) (578) (579) (580) (581) (582) (583) (584) (585) (586) (587) (588) (589) (590) (591) (592) (593) (594) (595) (596) (597) (598) (599) (600) (601) (602) (603) (604) (605) (606) (607) (608) (609) (610) (611) (612) (613) (614) (615) (616) (617) (618) (619) (620) (621) (622) (623) (624) (625) (626) (627) (628) (629) (630) (631) (632) (633) (634) (635) (636) (637) (638) (639) (640) (641) (642) (643) (644) (645) (646) (647) (648) (649) (650) (651) (652) (653) (654) (655) (656) (657) (658) (659) (660) (661) (662) (663) (664) (665) (666) (667) (668) (669) (670) (671) (672) (673) (674) (675) (676) (677) (678) (679) (680) (681) (682) (683) (684) (685) (686) (687) (688) (689) (690) (691) (692) (693) (694) (695) (696) (697) (698) (699) (700) (701) (702) (703) (704) (705) (706) (707) (708) (709) (710) (711) (712) (713) (714) (715) (716) (717) (718) (719) (720) (721) (722) (723) (724) (725) (726) (727) (728) (729) (730) (731) (732) (733) (734) (735) (736) (737) (738) (739) (740) (741) (742) (743) (744) (745) (746) (747) (748) (749) (750) (751) (752) (753) (754) (755) (756) (757) (758) (759) (760) (761) (762) (763) (764) (765) (766) (767) (768) (769) (770) (771) (772) (773) (774) (775) (776) (777) (778) (779) (780) (781) (782) (783) (784) (785) (786) (787) (788) (789) (790) (791) (792) (793) (794) (795) (796) (797) (798) (799) (800) (801) (802) (803) (804) (805) (806) (807) (808) (809) (810) (811) (812) (813) (814) (815) (816) (817) (818) (819) (820) (821) (822) (823) (824) (825) (826) (827) (828) (829) (830) (831) (832) (833) (834) (835) (836) (837) (838) (839) (840) (841) (842) (843) (844) (845) (846) (847) (848) (849) (850) (851) (852) (853

— Curve Data

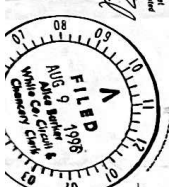
CURVE	PLUUS	TAKEDIT	LENGTH	DELTA	DEGREE	CHORD	CH BEARING
C-1	1850.00*	217.23	431.87	25000.00*	43.70	5.04749317	11.00
C-2	310.00*	66.73	133.86	17929.21**	13.19	5.04749317	11.00
C-3	150.00*	33.37	66.93	8964.60**	6.59	5.04749317	11.00
C-4	75.00*	16.68	33.46	4482.30**	3.30	5.04749317	11.00
C-5	37.50*	8.34	16.73	2241.15**	1.65	5.04749317	11.00
C-6	18.75*	4.17	8.36	1120.58**	0.83	5.04749317	11.00
C-7	9.37*	2.09	4.18	560.29**	0.41	5.04749317	11.00
C-8	4.69*	1.04	2.09	280.14**	0.21	5.04749317	11.00
C-9	2.34*	0.52	1.04	140.07**	0.11	5.04749317	11.00
C-10	1.17*	0.26	0.52	70.03**	0.05	5.04749317	11.00
C-11	0.59*	0.13	0.26	35.01**	0.03	5.04749317	11.00
C-12	0.29*	0.06	0.13	17.51**	0.01	5.04749317	11.00
C-13	0.15*	0.03	0.06	8.75**	0.00	5.04749317	11.00
C-14	0.07*	0.01	0.03	4.38**	0.00	5.04749317	11.00
C-15	0.04*	0.00	0.01	2.19**	0.00	5.04749317	11.00
C-16	0.02*	0.00	0.00	1.09**	0.00	5.04749317	11.00
C-17	0.01*	0.00	0.00	0.55**	0.00	5.04749317	11.00
C-18	0.00*	0.00	0.00	0.27**	0.00	5.04749317	11.00
C-19	0.00*	0.00	0.00	0.14**	0.00	5.04749317	11.00
C-20	0.00*	0.00	0.00	0.07**	0.00	5.04749317	11.00
C-21	0.00*	0.00	0.00	0.04**	0.00	5.04749317	11.00
C-22	0.00*	0.00	0.00	0.02**	0.00	5.04749317	11.00
C-23	0.00*	0.00	0.00	0.01**	0.00	5.04749317	11.00
C-24	0.00*	0.00	0.00	0.00**	0.00	5.04749317	11.00
C-25	0.00*	0.00	0.00	0.00**	0.00	5.04749317	11.00
C-26	0.00*	0.00	0.00	0.00**	0.00	5.04749317	11.00
C-27	0.00*	0.00	0.00	0.00**	0.00	5.04749317	11.00
C-28	0.00*	0.00	0.00	0.00**	0.00	5.04749317	11.00
C-29	0.00*	0.00	0.00	0.00**	0.00	5.04749317	11.00
C-30	0.00*	0.00	0.00	0.00**	0.00	5.04749317	11.00
C-31	0.00*	0.00	0.00	0.00**	0.00	5.04749317	11.00
C-32	0.00*	0.00	0.00	0.00**	0.00	5.04749317	11.00
C-33	0.00*	0.00	0.00	0.00**	0.00	5.04749317	11.00
C-34	0.00*	0.00	0.00	0.00**	0.00	5.04749317	11.00
C-35	0.00*	0.00	0.00	0.00**	0.00	5.04749317	11.00
C-36	0.00*	0.00	0.00	0.00**	0.00	5.04749317	11.00
C-37	0.00*	0.00	0.00	0.00**	0.00	5.04749317	11.00
C-38	0.00*	0.00	0.00	0.00**	0.00	5.04749317	11.00
C-39	0.00*	0.00	0.00	0.00**	0.00	5.04749317	11.00
C-40	0.00*	0.00	0.00	0.00**	0.00	5.04749317	11.00
C-41	0.00*	0.00	0.00	0.00**	0.00	5.04749317	11.00
C-42	0.00*	0.00	0.00	0.00**	0.00	5.04749317	11.00
C-43	0.						

- Certificate of Surveying Accuracy -

1. Gerald Steven Parish, a Professional Land Surveyor, hereby certifies that this plat correctly represents a boundary survey made by me, and the boundary monuments actually exist, within their size, type and location conforming with the Arkansas Minimum Standards for Property Boundary Surveys and that it is a true and correct copy of the original survey as filed with the Arkansas Geological Commission, Land Survey Division and adopted by the Arkansas State Board of Professional Engineers and Land Surveyors.

– Certificate of Owner –

I, the undersigned, registered agent on behalf of LTT, a Limited Liability Company, being sole owner of the real estate shown and described herein do hereby certify that I have caused this land to be surveyed, subdivided and platted and do hereby lay off, subdivide and plat said real estate in accordance with this survey plat.



– Certificate of Recording –

**NOTE:** This plan is not to scale, it has been reduced in order to meet restrictions set forth by the White County Circuit Clerk's Office. To receive a full size copy of this plan, please contact the address shown below.

**Sold property contains 38.79 acres more or less**

[illegible]